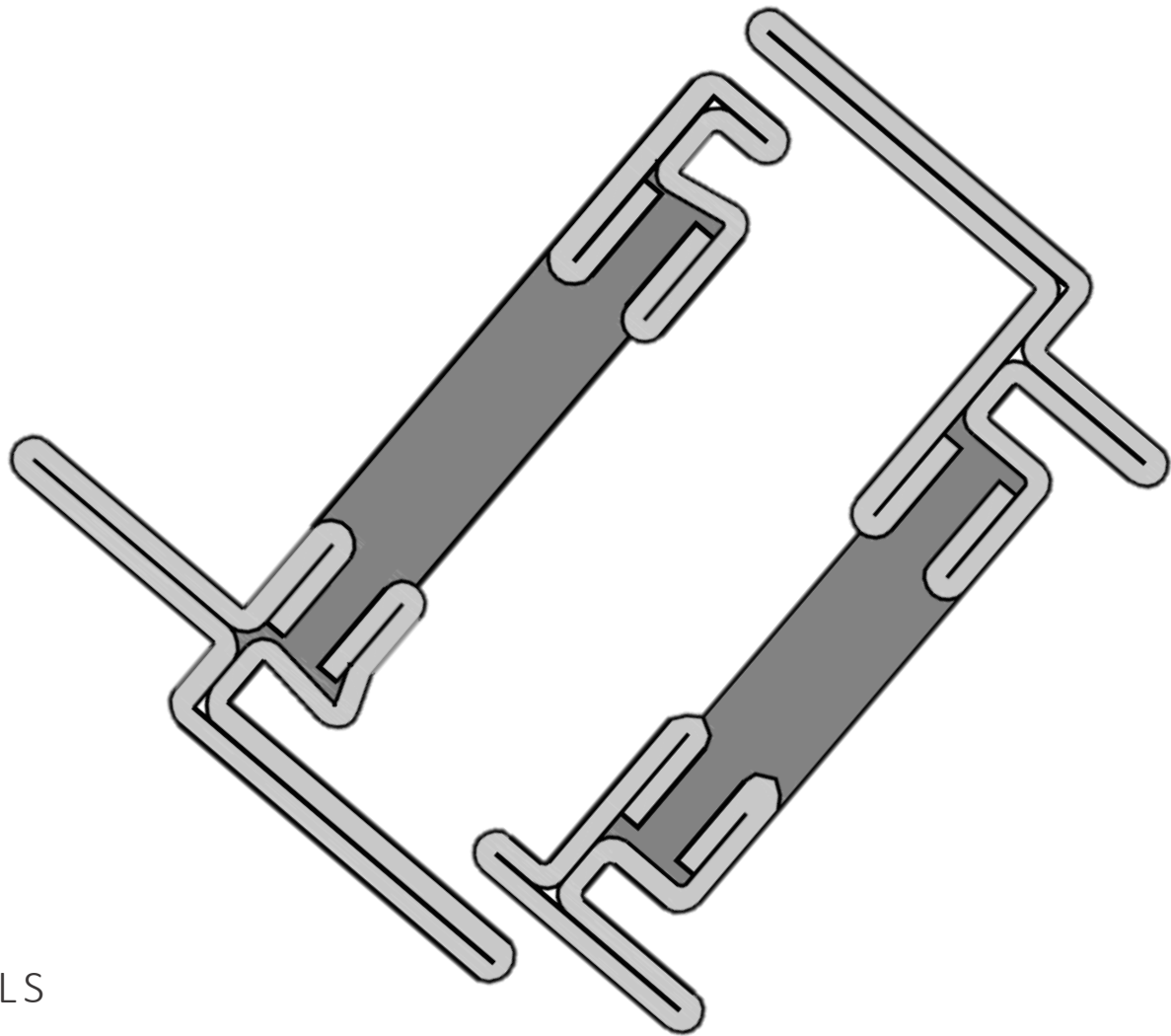
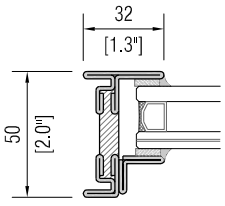


HTS

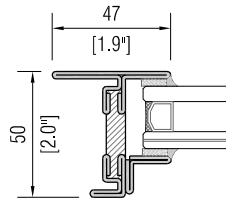
FRAME SERIES



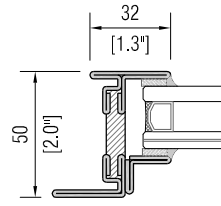
DIRECT FIXED



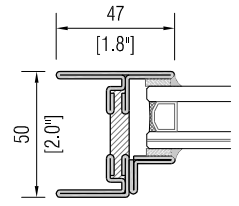
HTS 1001



HTS 1002

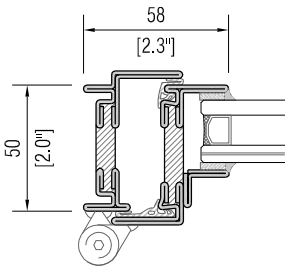


HTS 1003

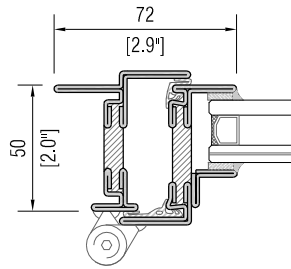


HTS 1005

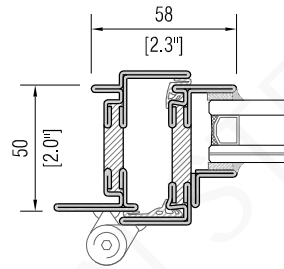
INSWING WINDOW AND DOOR



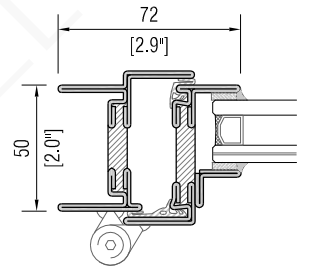
HTS 2001 - HTS 3033



HTS 2002 - HTS 3033

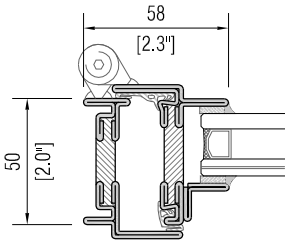


HTS 2003 - HTS 3033

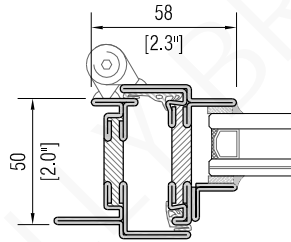


HTS 2005 - HTS 3033

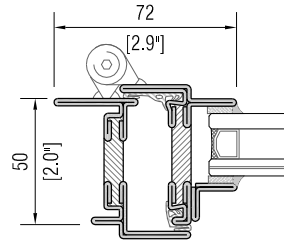
OUTSWING WINDOW AND DOOR



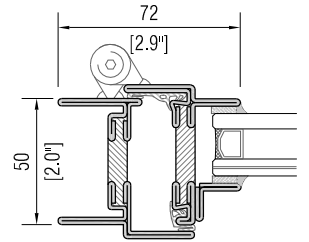
HTS 2001 - HTS 3062



HTS 2002 - STS 3062

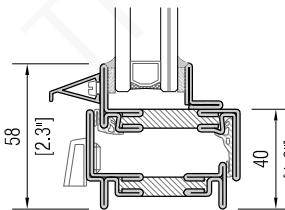


HTS 2003 - HTS 3062

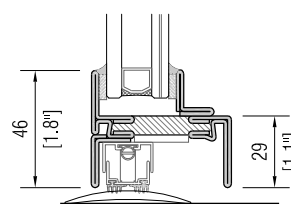


HTS 2005 - HTS 3062

SILL DETAIL | Inswing

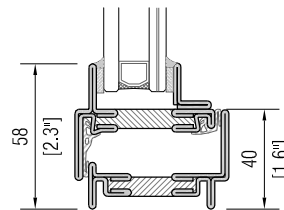


HTS 2001 - HTS 3033 | Window

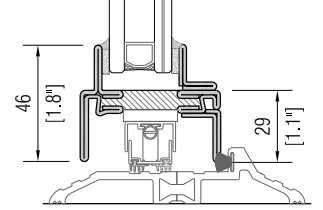


HTS 3033 | Door

SILL DETAILS | Outswing



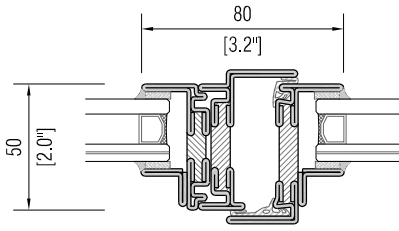
HTS 2001 - HTS 3062 | Window



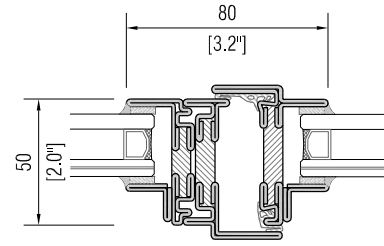
HTS 3062 | Door

OPERABLE NEXT TO FIXED | Inswing

OPERABLE NEXT TO FIXED | Outswing

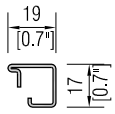


HTS 2001 - HTS 3033 - HTS 4001

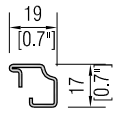


HTS 2001 - HTS 3062 - HTS 4001

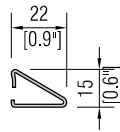
GLAZING BEADS



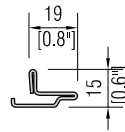
P.2607 | Regular



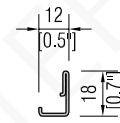
P.2627 | Grooved



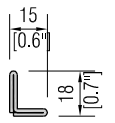
P.2629 | Sloped



P.2638 | Thin

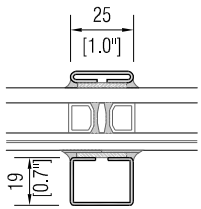


HTS 6010 | J

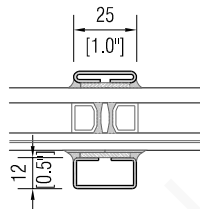


HTS 6020 | L

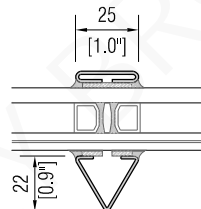
SDL | Simulated Divided Lites



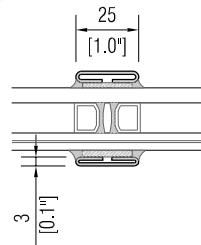
REGULAR 19



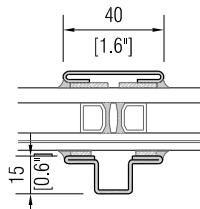
REGULAR 12



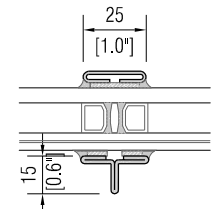
SLOPED



THIN

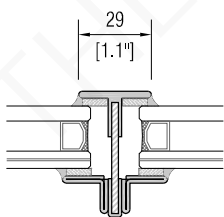


HTS 6073

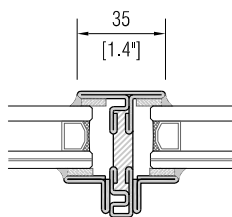


HTS 6075

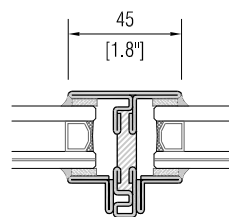
TDL | True Divided Lites



HTS 5003



HTS 5002



HTS 5001

It's not just a window or door, its history

VISIONARY INNOVATORS
CAPTURING THE WORLD'S MOST
luxurious portrait.