

MATERIALS

DESCRIPTION

ADVANTAGES

FINISHES

PAINTED



Both timely and traditional, our high quality painted, powder coat finish meets the requirements of the most meticulous Designers and Architectural professionals in the business, and is the number one choice for an intricate and decorative space.

- 10 Year Warranty on finish
- 7 to 10 times stronger than traditional paint
- Low coefficient of thermal expansion
- 5 times less thermally conductive than aluminum
- High resistance to scratches, fading and chipping
- Textured and Custom Paint colors available



Our Powder Coated (painted) finish is available in hundreds of high quality RAL colors and can be customized to meet any custom color request. In 2015, we became the first European company to ever receive QualiSteelCoat Approvals.

BRONZE



Iconic visual appeal revealed through its rich color scheme provides depth and prestige. Utilizing its naturally beautiful patina and custom surface finishes, Bronze is a rustic and stylish solution for creating traditional, historic or modern spaces.

- Very low maintenance requirements
- Ideal for heritage and historic applications
- Custom Patina variations
- 5 times less thermally conductive than aluminum
- Natural, self healing material
- Extreme resistance to corrosion



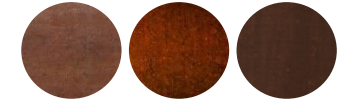
Our Bronze has 5 standard finishes (*Polished, Light Antique, Medium Antique, Dark Antique, and Blue Green*). We also have the ability to provide custom patinas upon request.

COR-TEN



Cor-Ten steel is the perfect combination of *style* and *toughness*. With warm color tones similar to bronze and rigidity comparable to stainless steel, this alloy brings the *best of both worlds* to a rustic, traditional or contemporary space.

- Very low maintenance requirements
- Ideal for industrial and rustic style applications
- High Ultimate Tensile Strength (UTS)
- Rare, unmatched finish color tone variations
- Custom Patina variations
- Natural, self healing steel
- Extreme resistance to corrosion



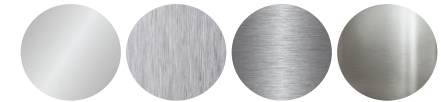
Cor-Ten, like Bronze, offers the natural ability to customize the color tone of its patina. Color tones range from soft, dark brown too a vibrant red and each variation in-between.

STAINLESS



Stainless Steel is the top chosen material in modern architecture and design. Not only are it's looks stunning and sleek, but it is the strongest, most wear resistant material available for window and door construction.

- Very low maintenance requirements
- Ideal for modern, waterfront applications
- Strongest and most resilient material type offered
- Custom finishes available
- Highest corrosion resistance
- Available in 304 or 316L Marine Grade steel



Our high quality Stainless Steel finishes vary based on the type of sanding or polishing method used. With that said, we offer this material in a Polished, Satin and Scotch Brite finish.

MULTI METAL



As if our material selection wasn't diverse enough, we took it one step further and offer the possibility to combine any 2 materials together into a single frame. For example, you may choose Cor-Ten or Bronze for the exterior profile and Painted or Stainless steel on the interior, or vice-versa.

- Ability to seamlessly combine any 2 materials
- The ultimate customization ability
- Very low maintenance requirements



Any combination of material types in any of our available finishes. Above are a few examples of material combinations.

WOOD CLAD



The combination of any of our high quality steel material types with beautiful standard pine cladding, or any specific wood species, enables you to create spaces utilizing the best of both worlds simultaneously; steel and wood.

- Low maintenance requirements
- Perfect mix of steel and wood
- Custom varnishes and stains for all wood species
- High quality pine clad as standard
- Wood type of your choice



Everything from the steel type and finish, too the wood finish and species is tailored specifically to meet the requirements and aesthetic style of your project.

Material Comparison

	HOT-DIP GALVANIZED STEEL	STAINLESS STEEL (304 / 316)	COR-TEN	BRONZE	
PROPERTIES	Ozone* Resistance	F	G / E	E	E
	Weather Resistance	F	G / E	E	E
	Chemical, Acid & Oil Resistance	F	G / E	F	F
	Tensile Strength	G	G / E	G	G
	Resilient, Impact Resistant	G	E	G	F
	Thermal Expansion / Shrinkage	E	E	G	G
	Sustainability	E	E	E	E
	Ruggedness (young's modulus, E)	G	E	F	F
	Thermal Conductivity	Average	Average	High	Highest

	5-10 years*	Lifetime*	Lifetime*	Lifetime*	
FEATURES	Warranty	5-10 years*	Lifetime*	Lifetime*	Lifetime*
	Weldable / Brazed Miters	✓	✓	✓	✓
	Paintable	✓	✓	✗	✗
	Hardware	✓	✓	✓	✓
	Indoor Applications	G	E	F	E
	Outdoor Applications	G	E	E	E
	100% Recycled Material	✓	✓	✓	✓
	Availability	✓	✓	✓	✓

COST	Initial Cost	Low	High	Medium	Very High
	Long Term Cost	Low	Very Low	Very Low	Very Low

KEY: P = Poor F = Fair G = Good E = Excellent

Finish Comparison

	PAINTED (Matte / Gloss / Textured)	BURNISHED	POLISHED / BRUSHED	
RESISTANCE	Fading / UV Light	G	E	E
	Chipping	G / G / E	E	E
	Scratching / Abrasion	F / G / E	E	G / E
	Staining	G	G	E
	Mildew Build up	G / E / P	G	E / F
	Color Bleeding	E	F / G	E
	Cold Climates (-10° F)	G	E	E
	Hot Climates (104° F)	G	E	E
	Acts of God	P	P	P

	5-10 years*	Lifetime*	Lifetime*	
FEATURES	Warranty	5-10 years*	Lifetime*	Lifetime*
	Visible Seams	E	G	E
	Maintenance	F / F / G	E	G
	Uniform Surface Finish	E	G	G
	Custom Finish	✓	✓	✓
	Self-healing Finish	✗	✓	✗
	Reparability	Moderate	Easy	Easy
	Availability	✓	✓	✓

COST	Initial Cost	Low	High	Medium
	Long Term Cost	Average	Low	Very Low

* NOTES:

- The term "Painted" refers to our durable Powder Coated Finish. For more information, please ask a representative.
- The galvanizing process used in the production of our galvanized steel frames is a hot-dipped galvanizing which adds a resilient coating of zinc to all surfaces of each profile prior to the application of any additional surface treatments.
- Warranty on Marine Powder coated galvanized steel is five (5) years when installed on coastal areas. There is no warranty on standard powdering coating on coastal areas.
- The term "Lifetime" refers to the lifetime of the house and is inclusive of all mechanical failure. See full warranty for details, inclusions and exclusions.
- Materials were tested at ozone levels exceeding 1,000 PPM.