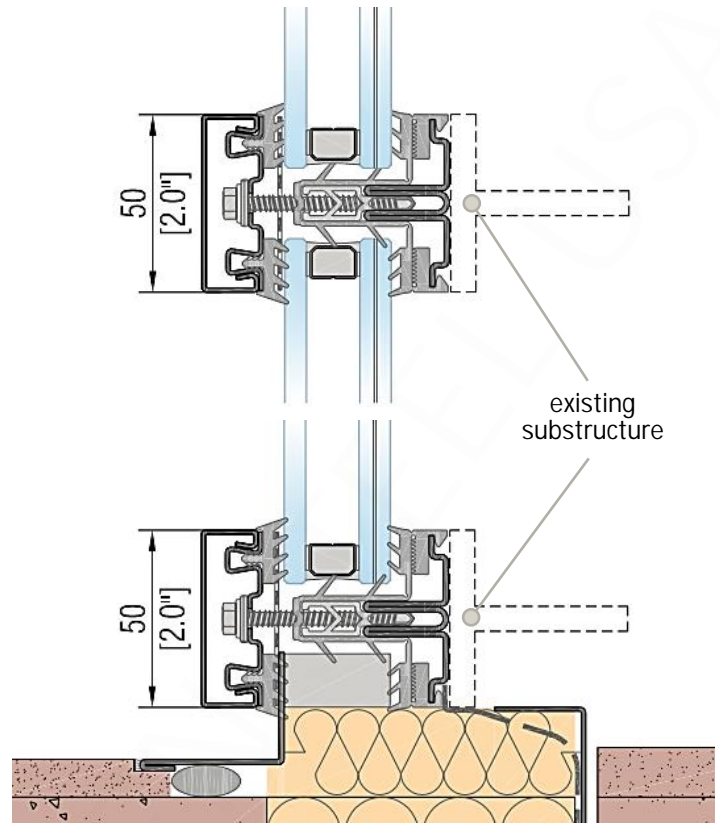


4F2

FRAME SERIES





> 4F2 Curtain Wall

Characteristic	Standards	Class	Assessment of Classification
Air Permeability	BS EN 12153 (Test)	AE	Airtight up to pressure of 1200 Pa (25.08 psf)
	BS EN 12007 (Classification)		Airtight up to wind speed of 159.29 km/h (98.98 mph)
Watertightness	BS EN 12154 (Test)		
	Static → BS EN 12154 (Classification)	RE900	Maximum Static Pressure → 900 Pa (18.81 psf)
	Dynamic → BS EN 13050 (Classification)	250	Minimum Dynamic Pressure → 250 Pa (5.23 psf)
	Dynamic → BS EN 13050 (Classification)	750	Maximum Dynamic Pressure → 750 Pa (15.68 psf)
Wind Load Resistance (DP)	BS EN 12179 (Test)		Design Load → $\pm 2.0 \text{ kN/m}^2$
	BS EN 13116 (Classification)		Safety Load → $\pm 3.0 \text{ kN/m}^2$
Impact Resistance	BS 8200 (Test)	I5	Above zone of normal impacts from people and not exposed to impact from thrown or kicked objects.
	E → External / I → Internal EN 14019 (Classification)	E5	
Acoustic Insulation Performance **	EN ISO 717-1:2007		Rw with Single Pane Glass → TBD
	Rw → Weighted Sound Reduction Index		Rw with Dual Pane (IGU) Glass → TBD
Thermal Transmittance (U-value) **	BS EN ISO 10077-1:2006		Ut → 0.80 W/m ² K
	Ut → Frame Thermal Transmittance BS EN ISO 10077-2:2012		Ut → 0.14 BTU/ft ² h°F
Visual Transmittance **	ANSI/NFRC 100-2014		VT → TBD
Solar Heat Gain Coefficient **	ANSI/NFRC 100-2014		SHGC → TBD

Test Unit Type: All Fixed (no mullions)

* Averaged Value

** Dependent on Glass and Glazing Type



T H E R M A L L Y B R O K E N S T E E L U S A



THERMALLYBROKENSTEELUSA.COM

#TBS_USA / @TBS_USA

