



THERMALLY BROKEN STEEL USA LLC'S
COLLECTION BY

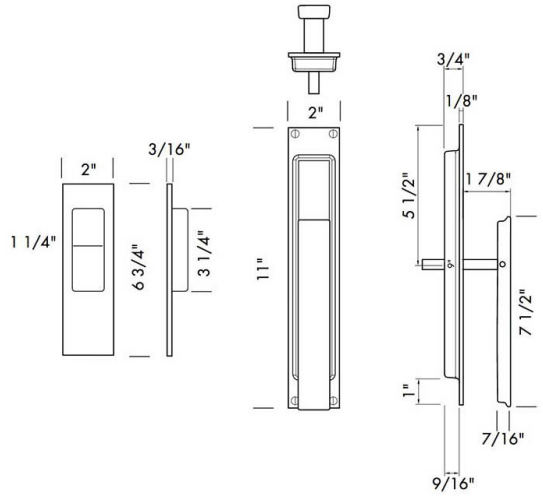
Sun Valley Bronze

Fine Solid Bronze
Architectural Hardware



CMP-1100LS
 Lift and Slide Set

2" x 6 3/4"



SILICON BRONZE

Silicon bronze contains the elements copper, silicon, and zinc resulting in a golden-copper hue.

Color range: Polished Natural / Reddish-Brown / Dark Brown

- S1** Satin silicon bronze. No patina applied. Color is light honey brown. This finish will naturally oxidize with age to a light reddish-brown with some green in high humidity installations.
- S2** Medium reddish-brown patina. Color will darken over time.
- S3** Dark brown patina. Often referred to as an oil-rubbed bronze finish (similar to US10B).



S1



S2



S3



W1

WHITE BRONZE

White bronze contains the elements copper, manganese, nickel, and zinc resulting in a silver hue.

Color range: Polished Nickel / Pewter Grey / Black

- W1** Satin white bronze. No patina applied. Color is bright nickel-silver.
- W2** Medium pewter grey patina (similar to US15A).
- W3** Dark grey / black patina.



W2



W3

RAW BRONZE

In addition to our standard patina selection, Sun Valley Bronze offers two raw finishes.

- S** Silicon bronze. No patina applied to the flat, tumbled bronze. Color is a light brown with a matte finish.
- W** White bronze. No patina applied to the flat, tumbled bronze. Color is a nickel-silver with a matte finish.



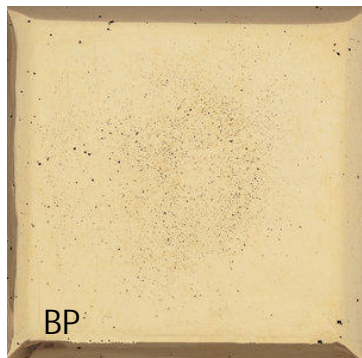
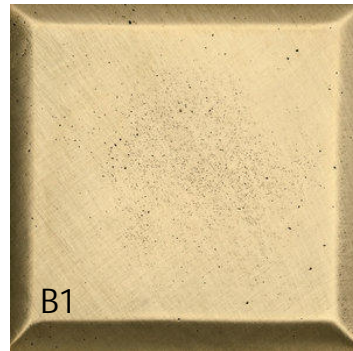
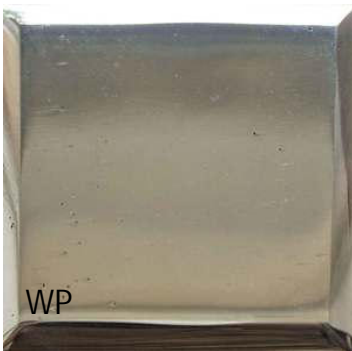
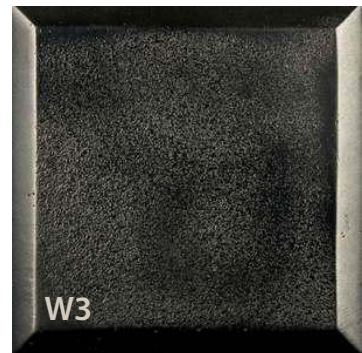
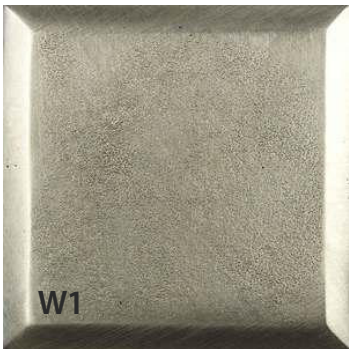
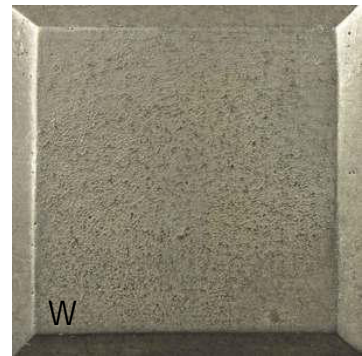
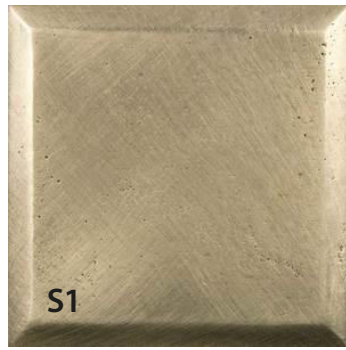
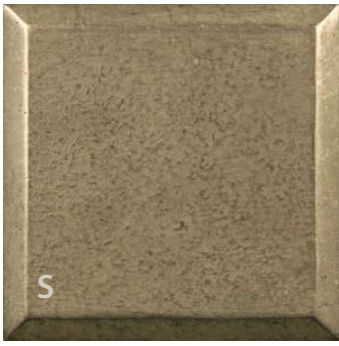
S



W

CARING FOR PATINAS

Bronze is naturally weather resistant. Very little care is needed to maintain it. Sun Valley Bronze recommends cleaning bronze hardware with mild soap and water. Do not use abrasive or chemical-based cleaners. Apply several coats of high quality clear paste wax to protect the finish.



See finishes webpage here...